

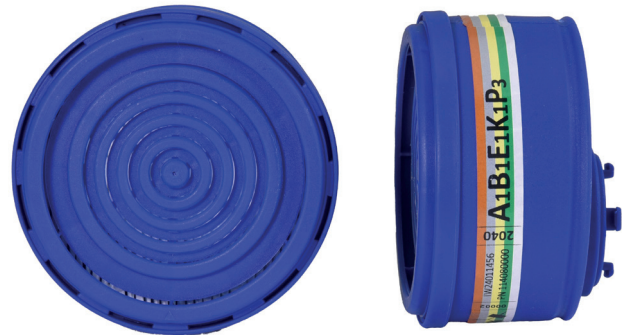


CARTRIDGE

Model: 2040 A1B1E1K1P3

P/N 114080000

Combined filter with special snap-in connector for organic vapours having boiling point higher than 65°C, inorganic gases and vapours, Sulphur Dioxide (SO₂), Ammonia (NH₃) and its derivatives, dusts, fumes, mists. The cartridge shall be used in pairs with half masks **DUETTA** and **DUO** or full face masks type **TR 2002 CL2** and **TR 2002 CL3** with **DUPLA** adapter.



TECHNICAL DATA

Inhalation resistance

at 15 l/min: 1.1 mbar
at 47.5 l/min: 3.4 mbar

Duration at gases

Filter type	Class	Test Gas	Test Concentration (PPM)	Test Flow (l/min)	Test HR (%)	Breakthrough concentration (PPM)	Duration Required (min)	Duration Tested (min)
A	1	C ₆ H ₁₂	1000	15	70	10	70	>90
B	1	Cl ₂	1000	15	70	0.5	20	>50
		H ₂ S	1000	15	70	10	40	>80
		HCN	1000	15	70	10	25	>35
E	1	SO ₂	1000	15	70	5	20	>40
K	1	NH ₃	1000	15	70	25	50	>70

Particle filtration performance

Filter type	Class	Test flow	Aerosol (%)	Pen Max allowed (%)	Test 1 (%)	Test 2 (%)
P	3	47.5 l/min	NaCl	0.05	0.009	0.0003
			Paraffin oil	0.05	0.008	0.001

Test 1: Penetration after long exposure to test aerosols

Test 2: Penetration after long exposure to test aerosols and after 24 h storage





CARTRIDGE

Model: 2040 A1B1E1K1P3
P/N 114080000

Limitations for use

Do not use in areas where the oxygen concentration is lower than 17% in volume (the permitted minimum oxygen concentration of ambient air is governed by national regulations) nor in presence of gases different from those clearly indicated. The filters are reusable more than one shift.

CLASSIFICATION

Filter complying with the provisions of Regulation (EU) **2016/425**, as III Category PPE.

Combined cartridge/ filter, class 1 for gas protection and **class P3** for particle filter, according to **EN 14387:2021**.

Filter also conforms to EN 14387:2004+A1:2008 for the performance requirements.

Label colour code: brown, grey, yellow, green, white.

MARKING

CE 0426

MATERIALS

Housing: polypropylene

Filter Media: activated carbon and filter paper

STORAGE

Store at temperatures between -20 and +50°C and R.H. <80%.

CHARACTERISTICS

Weight: 115 g (4.1 oz) approx.

Diameter max: 87 mm

Height incl. thread: 58 mm

Connection: special snap-in connector

PACKING

Cartridge is sold in 4 piece boxes with dimensions 175 x 115 x 85 mm.

SHELF LIFE

Filters duly stored and in their original packaging will last five years from production. The expiry date is printed onto filter label and packaging.

For more information please check the notes along with the products or the ones published on the website www.spasciani.com

NOTA: SPASCIANI SpA does not take any responsibility for any possible and unintentional mistake and reserve the faculty of modify materials and technical characteristics of its products at any time and without any notice. The pictures are purely indicative and may not represent the actual product described in the text.